

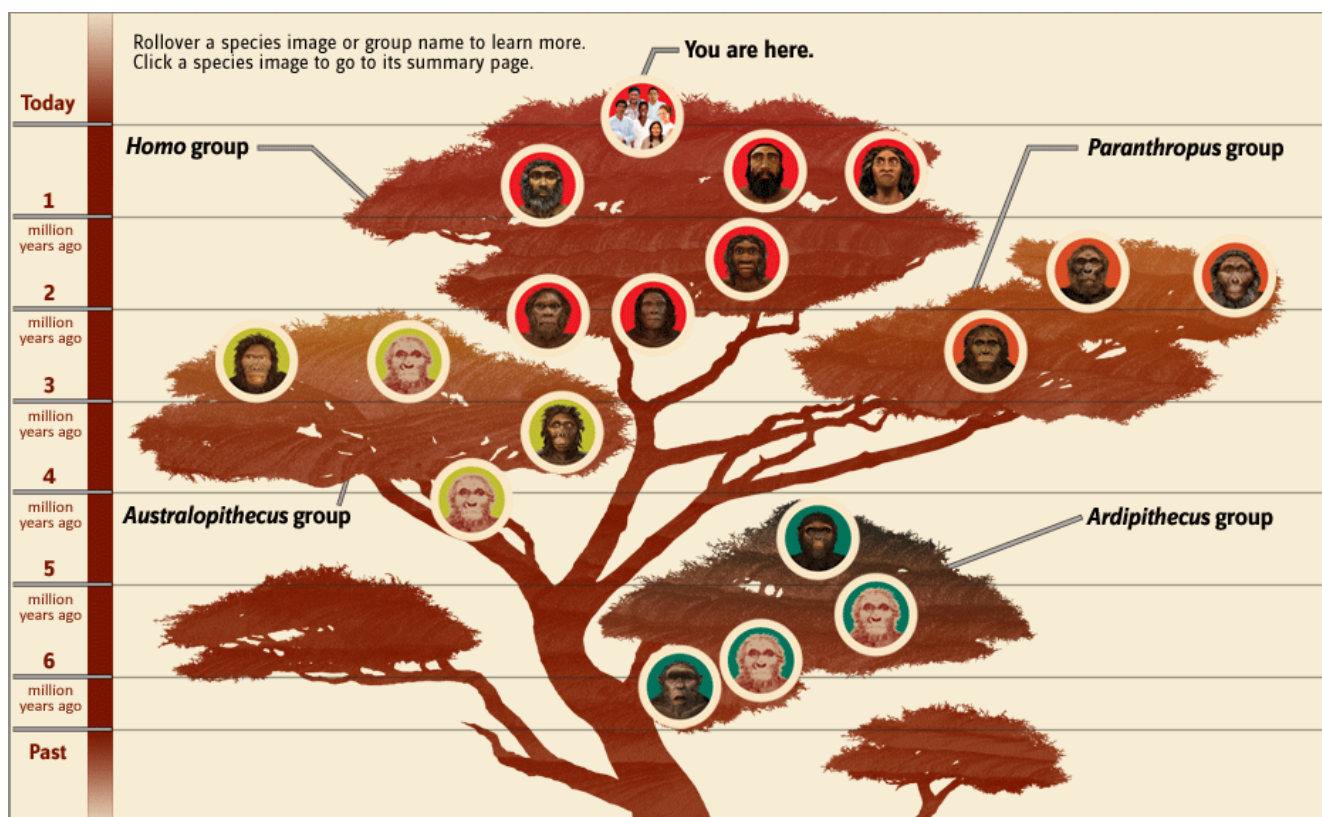
The bushy evolution of Homo Genus.

Excerpt of an interview of Ian Tattersall, PhD, curator in the Department of Anthropology at the American Museum of Natural History in New York

Q: Is the idea of a linear human evolution correct?

Well, the human family tree as it is increasingly emerging is very bushy in the sense there are many branches, many little twigs, many side branches, rather than a single slender trunk that's sort of proceeding in a majestic way towards the apex.

The bushy notion of human evolution is that the human family tree represents a rather bushy confirmation, with many side branches going off in different directions and many terminations as well as many beginnings. This is very different from the notion of the family tree as being a slender trunk rising towards the apex, and it's very clear at this point that our human family tree has been very bushy in its structure.



(screenshot from Smithsonian National Museum of Natural History website: <http://humanorigins.si.edu>)